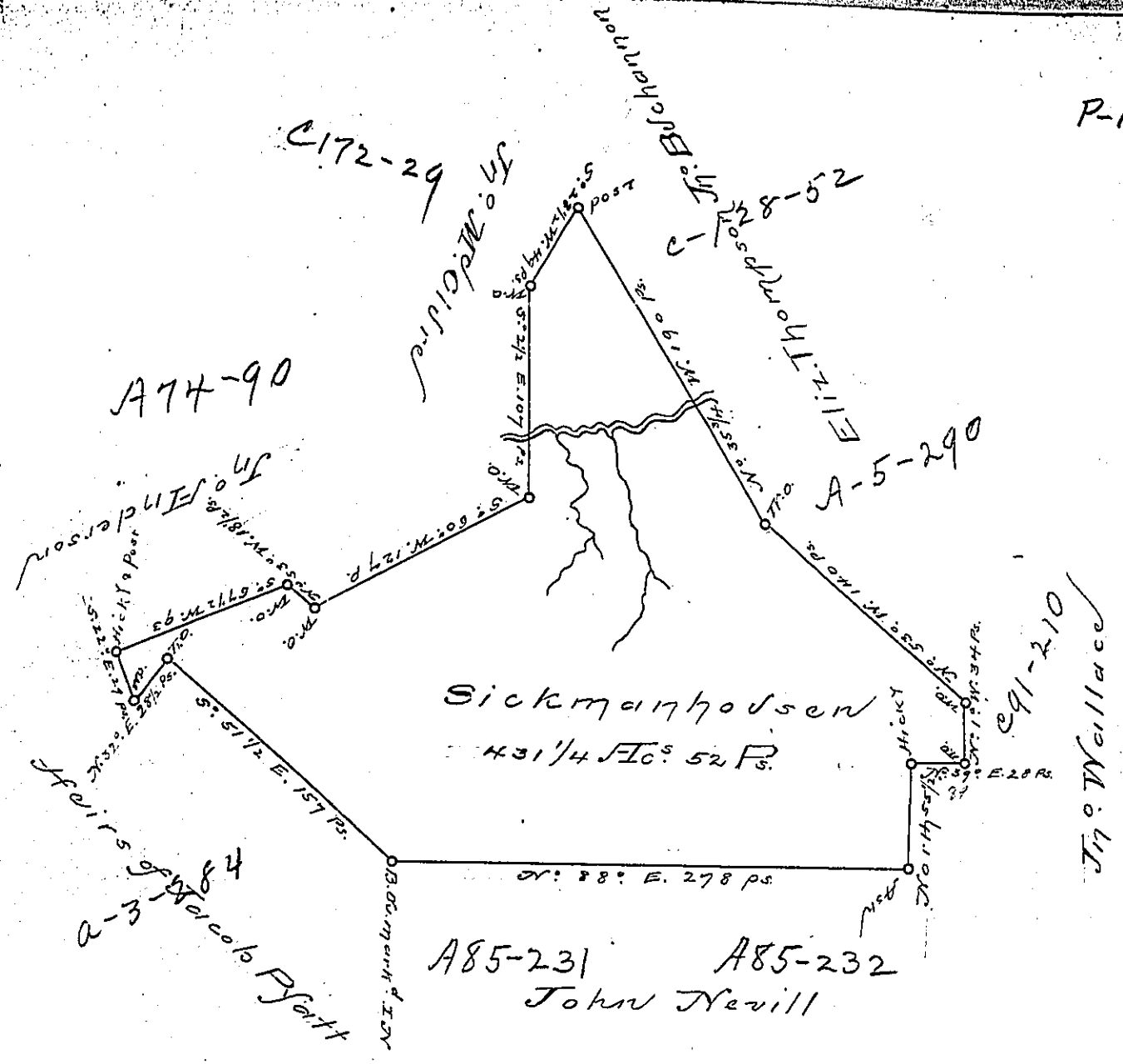


P-12-191

(1-200)



A Draught of a Survey called "Sickman's house" Situated on Peters Creek in Washington County containing 431 Ac. 52 Ps. strict Measure executed Nov. 8th 1787 in consequence of a Certif. for 400 Ac. granted to George Sickman by the Commiss^r appointed by Virginia to adjust the Claims to unpatented lands in the Counties Monong^a Yohg^a Ohio and duly entered with the County Sur^r &c

Rep. 20 Feby 88

Ent. 26 June 80

Jno Lukens Esq. S. Genl

Presley Nevill } Sfr
Math^r Ritchie }

IN TESTIMONY that the above is a copy of the original remaining on file in the Department of Internal Affairs of Pennsylvania, made conformably to an Act of Assembly approved the 16th day of February, 1833, I have hereunto set my Hand and caused the Seal of said Department to be affixed at Harrisburg, this

— Third — day of — September — 1895 —

James W. Fatta
Secretary of Internal Affairs.